

# RC2

Portable Radiation Detector



## Features

- Innovative detection technology
- Fully automatic, easy to use
- Extremely rugged, made specifically for the scrap metal industry
- Highly sensitive and responsive  
Utilizes large 32 cu.in. (0.54L) PVT plastic scintillation detector
- Adjustable sensitivity levels
- Automatically adjusts background
- Internal non-radioactive check source and re-chargeable battery pack
- Multi-language capability
- Variable alarm audio tone



[www.radcommsystems.com](http://www.radcommsystems.com)

Designed specifically for the metals industry, the RC2 Portable Radiation Detector is fully automatic, highly sensitive and easy to use.



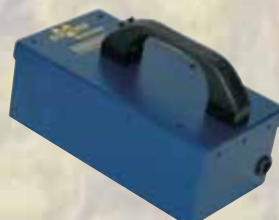
## Reliable and rugged handheld radiation detector with "Search and Find" capability

The RC2 portable radiation detector has been designed to detect very low radiation intensity levels from radioactive materials buried in scrap metal. The RC2 is an extremely effective handheld detector that utilizes a large 32 cu.in. (0.54L) internal PVT plastic scintillation detector, a common material found in most larger vehicle monitoring systems.

## Fully automatic and operator friendly

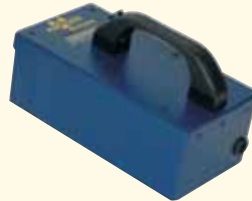
Operation of the RC2 is fully automatic and designed to allow fast and easy inspection of areas, containers or vehicles that may contain radioactive materials, or to verify or separate radioactive materials that have triggered an alarm on large scale radiation detection systems. The RC2 contains a state-of-the-art microprocessor and internal electric circuitry designed to automatically set the lowest achievable alarm level and to continuously monitor system operation in order to maintain consistent optimum performance.

In the event that radiation is detected, a varying audio tone will activate to help locate the source of the radiation. In addition, the display will show an increasing count/second (cps) numeric radiation level. The RC2 is equipped with an internal rechargeable battery pack that eliminates the need for stocking and changing conventional batteries. There are also three warning condition indicators for «Low Battery», «Change Batteries Now», and «Over Range», when the measured radiation exceeds the dynamic range (saturation) of the system.



**RADCOMM**  
RADIATION DETECTION SYSTEMS

- **Detector:**  
32 cu.in. (0.54L) plastic scintillator detector
- **Energy Responses:**  
From 30KeV
- **Sensitivity:**  
350 counts per second (cps) in 10:R/hr - standard background radiation. 29,500 cps responsive to 1 micro R/hr (0.01 micro SvH) Dose Rate <sup>137</sup>Cs.
- **Operation:**  
Single button activation automatically sets audio alarm levels and display function (counts per second or 10 second accumulation of counts). Remaining battery life is displayed (in hours) when RC2 is turned off.
- **Display:**  
Large 5.62 x 2.40 in. (15.75 x 61 mm) liquid crystal display of radioactive counts per second, updated every second
- **Temperature Range:**  
-10°C to +50°C (-10°F to +50°F)
- **Mechanical:**  
Structurally reinforced weatherproof aluminum case, shoulder strap
- **Size:**  
3.6 in. height + 2 in (51mm) handle x 5.1 in. width x 9.75 in. length (92mm x 130mm x 248mm)
- **Weight:**  
5.75 lbs (2.6 Kg)
- **Battery:**  
Rechargeable 6 volt sealed lead acid battery pack (internal) - 8 hours continuous operation/ charge at 2EC; 4 hour full re-charge using 100v/60Hz or 220v/50Hz smart battery charger supplied with RC2
- **Yearly calibration certificate available for ISO Quality or Environmental system**



### RC2 Standard Deliverables:

The RC2 is delivered fully charged and ready to go, including:

- RC2 instrument
- Check source
  - Test plug for simulated source testing
- Carrying strap
- Hard shell transportation case
- Smart battery wall charger
- Operations manual, including:
  - Radiation chart
  - Suggested procedure and operation safety guide



#### Corporate Head Office

Steve Steranka  
ssteranka@radcommsystems.com  
Mel Sauve  
melsauve@radcommsystems.com  
Scott Aikin  
saikin@radcommsystems.com  
2931 Portland Drive  
Oakville, ON CANADA L6H 5S4  
Phone: +1 905 829 8290  
Toll Free: 1 800 588 5229  
Fax: +1 905 829-1406

#### Europe

Geysen Joachim  
joachim.geysen@radcommeurope.com  
Aarschotsesteenweg 148C 2230 Herselt, Belgium  
Tel. +32 16 57 20 72 Fax +32 16 57 35 72

#### USA

Joshua Hunter  
jhunter@radcommsystems.com  
602 E. Lincolnway Ave., Valparaiso, IN 46383 USA  
Tel. +1 219 476 9037 Fax +1 219 476 9197